

282 Series 2-way Ball Valves (1/4" to 4")

Brass Body, Full Port, Manually Operated



Description

The 282 series brass 2-way ball valves are economical manual on/off valves. They are available with NPT Female, NPT Male x Female, and Solder end connections. Four different manual handle styles are offered.

Features

- Full port ball drilling for unrestricted flow
- Investment cast 2-piece brass body
- Blow-out proof stem
- Compact assembly
- Locking device available
- Adjustable stem packing
- 100% factory tested

Materials of Construction

Body & End Cap: Brass
Seats & Seals: PTFE
Ball: Chrome Plated Brass

Specifications

Max. Temperature: 366°F
Max. Pressure: 600 PSIG (WOG)
150 PSIG (WSP)

Cv: (see dimension pages)

End Connections

- NPT (female) 1/4" to 4"
- NPT (male x female) 1/4" to 1"
- Solder 1/2" to 4"

Handles Types



Standard Lever
(all sizes)



Lever w/ Extension
(all sizes)



Locking Lever
(all sizes)



Oval
(up to 2")



Tee
(up to 1")



All valves listed as part of the **Quick-Ship Program** are kept in stock, and will be shipped from the factory within 24 hours of order placement. To order, visit assuredautomation.com, or call 1-800-899-0553.

NPT Connections (female x female) *See dimension pages for additional models*

Size	Std. Lever		Lever w/ Extension		Locking Lever		Oval		Tee	
1/4"	A282NM	\$6.75	A282NME	\$13.55	A282NML	\$11.07	A282NMO	\$32.09	A282NMT	\$8.51
3/8"	B282NM	\$6.75	B282NME	\$13.55	B282NML	\$11.07	B282NMO	\$32.09	B282NMT	\$8.51
1/2"	C282NM	\$8.27	C282NME	\$15.21	C282NML	\$12.59	C282NMO	\$33.61	C282NMT	\$10.55
3/4"	D282NM	\$11.79	D282NME	\$20.31	D282NML	\$16.57	D282NMO	\$38.40	D282NMT	\$15.03
1"	E282NM	\$17.55	E282NME	\$26.61	E282NML	\$22.32	E282NMO	\$44.25	E282NMT	\$22.13
1 1/4"	F282NM	\$30.54	F282NME	\$43.17	F282NML	\$36.82	F282NMO	\$60.56		N/A
1 1/2"	G282NM	\$45.21	G282NME	\$59.24	G282NML	\$51.49	G282NMO	\$75.23		N/A
2"	H282NM	\$64.12	H282NME	\$84.39	H282NML	\$72.36	H282NMO	\$94.14		N/A

282N... NPT Connections (female x female)



Features

- Full port ball drilling for unrestricted flow
- Investment cast 2-piece brass body
- Blow-out proof stem
- Compact assembly
- Locking device available
- Adjustable stem packing
- 100% factory tested

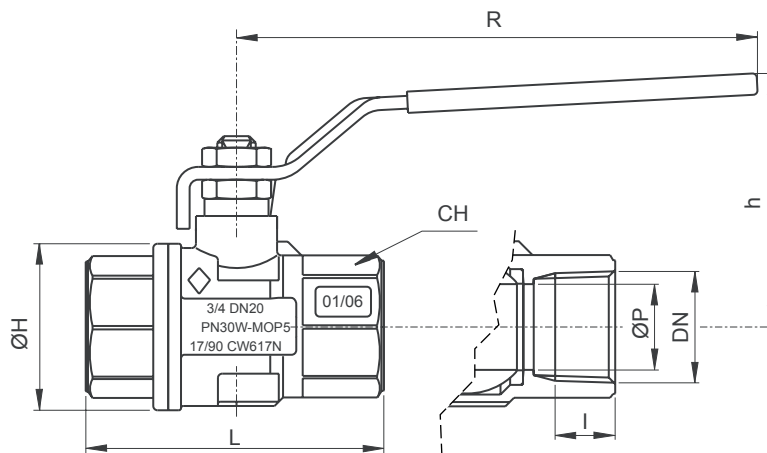
Specifications

- Temperature Range:**
- up to 366°F
- Max. Pressure:**
- 600 PSIG (WOG)
 - 150 PSIG (WSP)

Approvals



Dimensions:



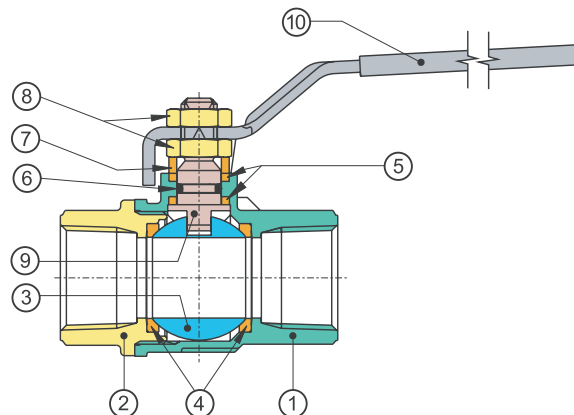
CONNECTIONS: ANSI B 1.20.1

Size	Model Code	ØP	I	L	ØH	CH	R	h	Cv	Wt (lbs.)
1/4"	A282N...*	0.39	0.39	2.02	0.90	0.78	3.78	1.65	6.29	0.33
3/8"	B282N...*	0.39	0.40	2.02	0.90	0.78	3.78	1.65	6.99	0.30
1/2"	C282N...*	0.59	0.53	2.44	1.25	0.98	3.78	1.81	19	0.48
3/4"	D282N...*	0.78	0.55	2.71	1.53	1.22	4.76	2.28	34.4	0.79
1"	E282N...*	0.98	0.66	3.07	1.92	1.49	4.76	2.44	50.1	1.22
1 1/4"	F282N...*	1.25	0.68	3.42	2.32	1.88	5.94	3	103.7	2.14
1 1/2"	G282N...*	1.57	0.68	3.89	2.87	2.12	5.95	3.23	268.4	3.20
2"	H282N...*	1.94	0.69	4.33	3.38	2.63	6.30	3.74	309.2	4.08
2 1/2"	I282N...*	2.56	0.93	5.59	4.37	3.54	8.11	4.84	629	8.28
3"	J282N...*	3.15	1.01	6.45	5.35	4.13	8.11	5.23	1018	13.00
4"	K282N...*	3.94	1.09	7.60	6.35	5.12	10.27	6.49	1622	22.07

* add letter to specify **Handle Type**: **M** = Standard Lever, **L** = Locking Lever, **E** = Lever with Extension, **O** = Oval, **T** = Tee

Materials:

#	Part Name	Material	No. of Pieces
1	Valve Body	Brass CW 617N UNI EN 12165	1
2	End Connection	Brass CW 617N UNI EN 12165	1
3	Ball	Brass CW 617N UNI EN 12165	1
4	Ball Seat	PTFE	2
5	Thrust Washer / Stem Seal	PTFE	2
6	O-ring	NBR	1
7	Packing Gland	Brass CW 614N UNI EN 12164	1
8	Nut	Steel 6S	2
9	Stem	Brass CW 614N UNI EN 12164	1
10	Handle	Fe P11 UNI EN 10111	1



282 Series Brass, 2-way Ball Valves

282M... NPT Connections (male x female)



Features

- Full port ball drilling for unrestricted flow
- Investment cast 2-piece brass body
- Blow-out proof stem
- Compact assembly
- Locking device available
- Adjustable stem packing
- 100% factory tested

Specifications

Temperature Range:

- up to 366°F

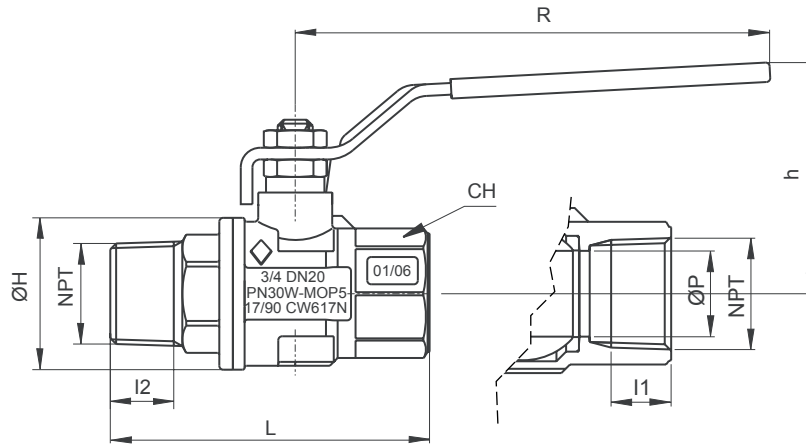
Max. Pressure:

- 600 PSIG (WOG)
- 150 PSIG (WSP)

Approvals



Dimensions:



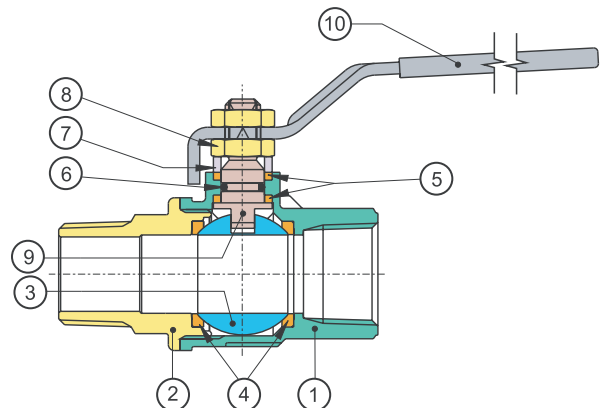
CONNECTIONS: ANSI B 1.20.1

Size	Model Code	ØP	I1	I2	L	ØH	CH	R	h	Cv	Wt (lbs.)
1/4"	A282M...*	0.39	0.39	0.40	2.30	0.90	0.78	3.78	1.65	6.29	0.31
3/8"	B282M...*	0.39	0.40	0.41	2.32	0.90	0.78	3.78	1.65	6.99	0.31
1/2"	C282M...*	0.59	0.53	0.53	2.81	1.25	0.98	3.78	1.81	19.00	0.51
3/4"	D282M...*	0.78	0.55	0.55	3.13	1.53	1.22	4.76	2.28	34.40	0.79
1"	E282M...*	0.98	0.66	0.68	3.58	1.92	1.49	4.76	2.44	50.00	1.26

* add letter to specify **Handle Type**: **M** = Standard Lever, **L** = Locking Lever, **E** = Lever with Extension, **O** = Oval, **T** = Tee

Materials:

#	Part Name	Material	No. of Pieces
1	Valve Body	Brass CW 617N UNI EN 12165	1
2	End Connection	Brass CW 617N UNI EN 12165	1
3	Ball	Brass CW 617N UNI EN 12165	1
4	Ball Seat	PTFE	2
5	Thrust Washer / Stem Seal	PTFE	2
6	O-ring	NBR	1
7	Packing Gland	Brass CW 614N UNI EN 12164	1
8	Nut	Steel 6S	2
9	Stem	Brass CW 614N UNI EN 12164	1
10	Handle	Fe P11 UNI EN 10111	1



282S... Solder Connections



Features

- Full port ball drilling for unrestricted flow
- Investment cast 2-piece brass body
- Blow-out proof stem
- Compact assembly
- Locking device available
- Adjustable stem packing
- 100% factory tested

Specifications

Temperature Range:

- up to 366°F

Max. Pressure:

- 600 PSIG (WOG)
- 150 PSIG (WSP)

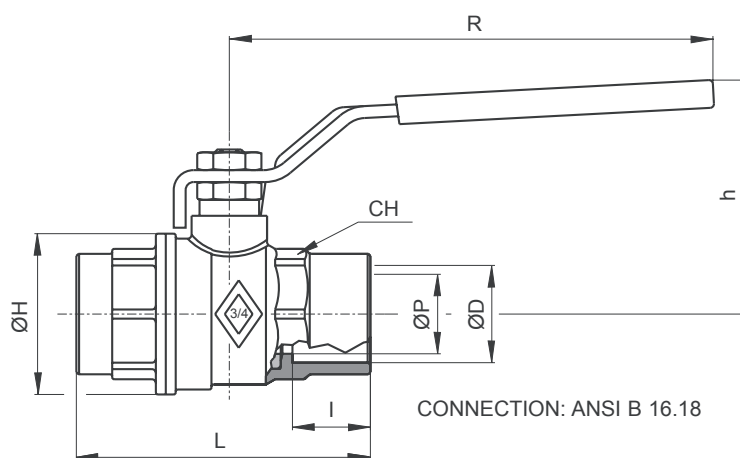
Approvals



Acc. to **NSF 61**

Up to 2"

Dimensions:



Size	Model Code	ØP	L	I	h	R	ØD	ØH	CH	Cv	Wt (lbs.)
1/2"	C282S...*	0.57	2.58	0.50	1.81	3.78	0.63	1.30	0.98	18.90	0.50
3/4"	D282S...*	0.76	3.00	0.75	2.28	4.76	0.88	1.53	1.22	34.22	0.77
1"	E282S...*	0.98	3.56	0.91	2.44	4.76	1.13	1.93	1.50	49.88	1.19
1 1/4"	F282S...*	1.26	4.09	0.96	3.00	5.94	1.38	2.32	1.90	103.00	2.20
1 1/2"	G282S...*	1.57	4.56	1.10	3.23	5.95	1.63	2.87	2.12	266.10	3.24
2"	H282S...*	1.95	5.45	1.34	3.74	6.30	2.13	3.38	2.64	307.00	4.21
2 1/2"	I282S...*	4.56	6.90	1.47	4.84	8.11	2.63	4.37	3.54	624.00	9.44
3"	J282S...*	3.05	8.05	1.67	5.23	8.11	3.13	5.35	4.13	1009.00	14.52
4"	K282S...*	3.94	10.25	2.16	6.94	10.27	4.13	6.53	5.12	1607.00	24.83

* add letter to specify **Handle Type**: **M** = Standard Lever, **L** = Locking Lever, **E** = Lever with Extension, **O** = Oval, **T** = Tee

Materials:

#	Part Name	Material	No. of Pieces
1	Valve Body	Brass CW 617N UNI EN 12165	1
2	End Connection	Brass CW 617N UNI EN 12165	1
3	Ball	Brass CW 617N UNI EN 12165	1
4	Ball Seat	PTFE	2
5	Thrust Washer / Stem Seal	PTFE	2
6	O-ring	NBR	1
7	Packing Gland	Brass CW 614N UNI EN 12164	1
8	Nut	Steel 6S	2
9	Stem	Brass CW 614N UNI EN 12164	1
10	Handle	Fe P11 UNI EN 10111	1

